



MEN T-SHIRTS
STANLEY SHIFTS DRY

STTM558

The men's dry handfeeling long sleeve t-shirt

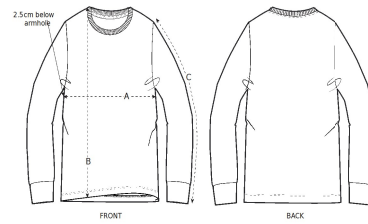
Single Jersey
 100% Organic ring-spun combed cotton
 200 GSM

- Set-in sleeve
- 1x1 rib at neck collar and sleeve hem
- Inside back neck tape in self fabric
- Bottom hem with wide double topstitch

MEDIUM FIT

S	M	L	XL	XXL
---	---	---	----	-----

Size guide



SIZES		S	M	L	XL	XXL
A	Half Chest	48.5	51.5	54.5	57.5	60.5
B	Body Length	70	73	75	77	79
C	Sleeve Length	65.5	66.5	67.5	68.5	69.5

Wash similar colours together, do not iron on print, wash and iron inside out.

