



WOMEN HOODIE SWEATSHIRTS
STELLA BOWER

STSW132

The women's cropped hoodie sweatshirt

Brushed Sweatshirt

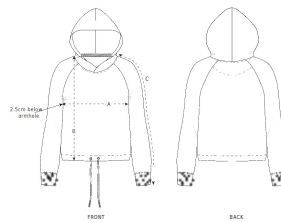
85% Organic ring-spun combed cotton, 15% Recycled polyester
 300 GSM

- Raglan sleeve
- Lined hood in single jersey
- Inside herringbone back neck tape
- Self fabric half moon at back neck
- Single needle topstitch at neckline and bottom hem
- 1x1 rib at sleeve hem with twin needle topstitch
- Round drawcords at bottom hem in matching body colour with metal tipping
- Metal eyelets

MEDIUM FIT

XS	S	M	L	XL
----	---	---	---	----

Size guide



SIZES		XS	S	M	L	XL
A	Half Chest	50.5	53	56	59	62
B	Body Length	55	57	59	61	62
C	Sleeve Length	67.8	69	70.5	71.8	73

Wash similar colours together, do not iron on print, wash and iron inside out.

